

11. m<sup>2</sup> large heestoes

- 1 *Baccharis repens* L.
- 2 *Conium maculatum* L.
- 3 *Conium maculatum* L.
- 4 *Conium maculatum* L.
- 5 *Conium maculatum* L.
- 6 *Conium maculatum* L.
- 7 *Conium maculatum* L.
- 8 *Conium maculatum* L.
- 9 *Conium maculatum* L.
- 10 *Conium maculatum* L.
- 11 *Conium maculatum* L.

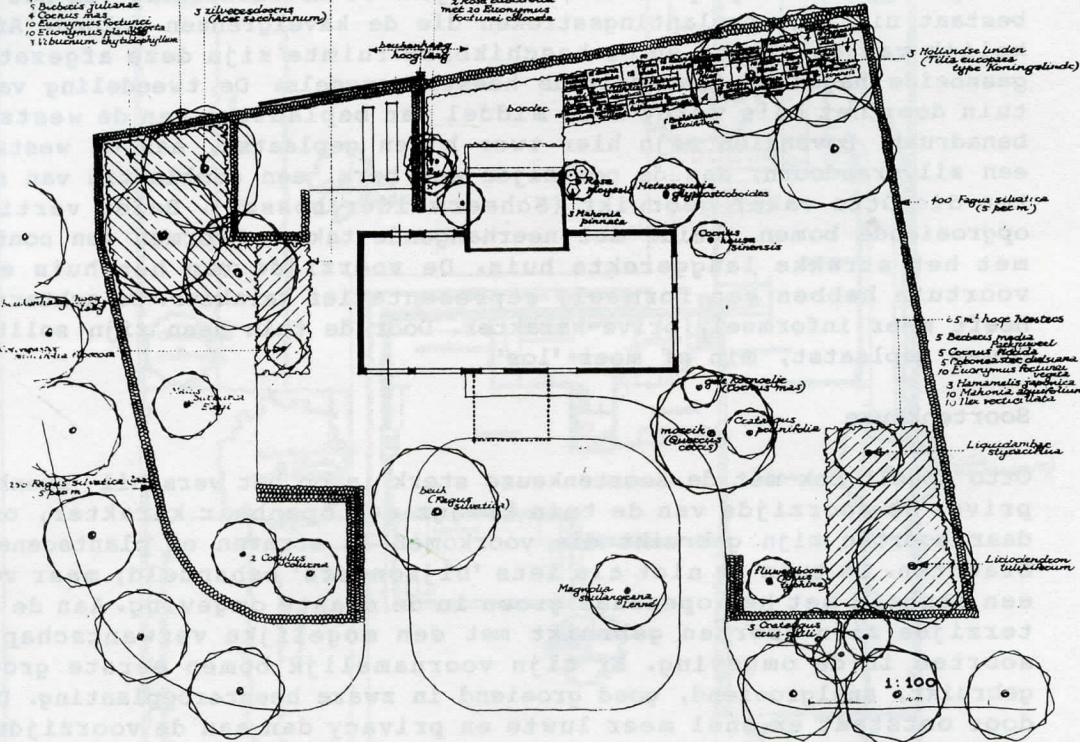
120 *Fagus sylvatica* (hoog)  
(5-6 per 2 m)

70 m<sup>2</sup> hoge heestoes

- 1 *Amelanchier canadensis*
- 2 *Baccharis repens*
- 3 *Baccharis repens*
- 4 *Conium maculatum*
- 5 *Conium maculatum*
- 6 *Conium maculatum*
- 7 *Conium maculatum*
- 8 *Conium maculatum*
- 9 *Conium maculatum*
- 10 *Conium maculatum*
- 11 *Conium maculatum*

3 *Linum catharticum*  
(Aloe saccharinum)

- 1 *Conium maculatum*
- 2 *Conium maculatum*
- 3 *Conium maculatum*
- 4 *Conium maculatum*
- 5 *Conium maculatum*
- 6 *Conium maculatum*
- 7 *Conium maculatum*
- 8 *Conium maculatum*
- 9 *Conium maculatum*
- 10 *Conium maculatum*
- 11 *Conium maculatum*



GEMEENTE BUNNIK  
AMTSWONING BURGEMEESTER

Week 1, 19 (1916) BEPLANTING

10/10